

## Upgraded Wheel Loaders boost productivity and lower operational costs

*Bauma, April 2010* - Komatsu recently introduced a minor modification to the WA470-6 LC and WA480-6 LC wheel loaders. These new models are a unique answer to the increased operational and ownership costs caused by increased fuel prices.

The upgrade is related to a completely new drive line, now equipped with a large-capacity torque converter (LC) for optimal efficiency and unparalleled initial rimpull-to-weight ratio. Because of this unequalled rimpull at low speeds, material penetration is now easier and faster than ever. Productivity is also superior in V-Shape loading, even in confined spaces. The new LC machines enjoy plenty of acceleration and can achieve high travel speeds, even on grades. This significantly assists productivity, and delivers great value for load & carry operations. Also new, the optional sequential torque converter lock-up system already starts operating in 2<sup>nd</sup> gear and drastically improves fuel efficiency and productivity in load & carry operations.

The efficiency of these Komatsu loaders is further enhanced by a load-sensing hydraulic system that features electronically controlled variable displacement pumps for the work equipment and the hydraulic steering. This new technology saves more fuel by always providing the exact hydraulic flow required, without any losses, thus improving the work speed and providing precise control.

For this new series Komatsu also offers new safety features such as an electrical tilting step, a safety belt warning system, a remote-controlled step light and other systems that all provide the operator with a safer daily job.

In addition, the latest available KOMTRAX™ 2.5 system for the wheel loader range is standard and offers an overview of both the monthly and daily fuel consumption.

### Specifications

|                               | <b>WA470-6 LC</b>        | <b>WA480-6 LC</b>        |
|-------------------------------|--------------------------|--------------------------|
| Operating weight              | 23 tons                  | 25.5 tons                |
| Net power                     | 202 kW / 272 HP          | 224 kW / 300 HP          |
| Payload capacity              | 7500 kg                  | 8000 kg                  |
| Bucket capacity               | 4.0 – 5.5 m <sup>3</sup> | 4.5 – 6.0 m <sup>3</sup> |
| Full-turn static tipping load | 16,520 kg                | 18.325 kg                |
| Hinge-pin height              | 4340 mm                  | 4485 mm                  |

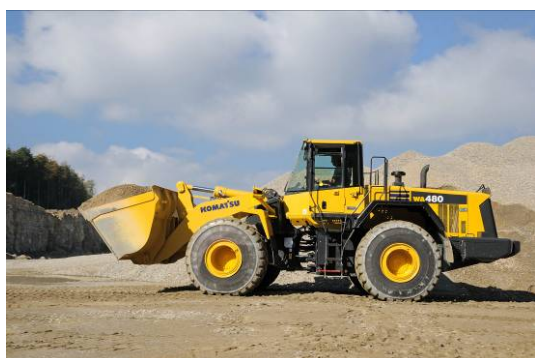
*Information in the news releases is current on the date of the announcement and is subject to change without notice.*



WA470-6 LC



WA470-6 LC



WA480-6 LC



WA480-6 LC

---

Contact:

Kevin Broman

Komatsu Europe International N.V.

+32 2 255 24 58

[kevin.broman@komatsu.eu](mailto:kevin.broman@komatsu.eu)

Call the experts<sup>®</sup>

**KOMATSU**