

# KOMATSU

## 2023



Utility range



**Mini-excavators**



**A range of new skid steer loaders**



**Compact wheel loaders**

Utility range

## Highlights 2023



**Rigid and 4-wheel-steering  
backhoe loader models**

**Wheeled and crawler  
midi-excavators**









## Mini-excavators

The latest Komatsu MR-5 mini-excavators are packed full of outstanding and improved features. This new generation introduces many industry firsts to the European market: it further harnesses Komatsu's unrivalled technological know-how to bring industry-leading customer values to the mini-excavator sector.



## Mini-excavators



Remarkably versatile, Komatsu's mini-excavators are compact, light, and powerful. They can work anywhere, particularly in tight spaces. Perfectly suited to both end-users and rental companies, these machines offer first-class comfort and controllability to the experienced and the novice operator alike.

## Mini-excavators

### Mini-excavators

Model	Engine power (ISO 14396)			Operating weight	Max. digging depth	Bucket capacity
	kW	HP	PS			
				kg	mm	m <sup>3</sup>
PC09-1	6.8	9.1	9.2	880 - 1080	1465	0.016 - 0.025
PC14R-3	11.6	15.6	15.8	1440 - 1800	2000 - 2250	0.03 - 0.06
PC16R-3	11.6	15.6	15.8	1570 - 1920	2180 - 2410	0.03 - 0.06
PC17R-5	11.8	15.8	16.0	1755 - 1835	2000 - 2200	0.022 - 0.028
PC18MR-5	11.8	15.8	16.0	1900 - 1990	2160 - 2360	0.03 - 0.06
PC20R-5	11.8	15.8	16.0	1985 - 2040	2100 - 2370	0.020 - 0.030
PC24MR-5	15.8	21.2	21.5	2340 - 2620	2315 - 2665	0.035 - 0.085
PC26MR-5	15.8	21.2	21.5	2640 - 2900	2470 - 2720	0.035 - 0.085
PC30MR-5	18.2	24.4	24.7	3140 - 3400	2760 - 3130	0.03 - 0.10
PC35MR-5	18.2	24.4	24.7	3575 - 3835	3110 - 3455	0.04 - 0.12
PC45MR-5	29.1	39.0	39.6	4595 - 5020	3300 - 3705	0.055 - 0.16
PC55MR-5	29.1	39.0	39.6	5160 - 5350	3770 - 4130	0.055 - 0.18
PC58MR-5	29.1	39.0	39.6	5570 - 5640	3770 - 4130	0.055 - 0.18





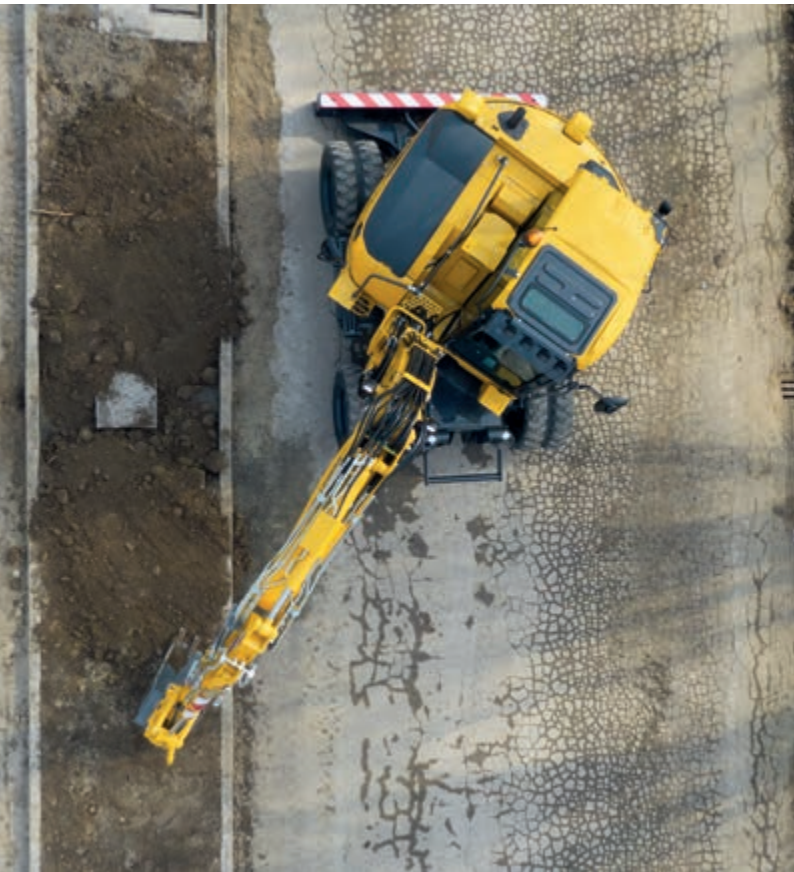




## Midi-excavators

Komatsu created midi-excavators as the perfect compromise between the compactness and manoeuvrability of mini-excavators and the power of larger earthmoving machines.

## Midi-excavators



Komatsu's crawler and wheeled midi-excavators are specifically designed to work in tight spaces and hard-to-reach areas. With special features and options, these multipurpose machines are equipped with a swing offset boom and can be supplied in customised configurations.

## Midi-excavators

### Midi-excavators

Model	Engine power (ISO 14396)			Operating weight	Max. digging depth	Bucket capacity
	kW	HP	PS			
PC78US-11	50.7	68.0	68.9	7910 - 8080	4660	0.090 - 0.200
PC80MR-5	46.2	62.0	62.8	8000 - 8270	3975 - 4335	0.130 - 0.270
PC88MR-11	50.7	68.0	68.9	8500 - 9130	4160 - 4675	0.090 - 0.340
PW98MR-11	50.7	68.0	68.9	10090 - 10760	4055 - 4305	0.107 - 0.282
PW138MR-11	72.6	97.3	98.7	13350 - 13950	4180 - 4330	0.093 - 0.400









## Skid steer loaders

Just jump in any Komatsu skid steer loader – and enjoy the ride. With a standard joystick and simple controls at your fingertips, you will find these machines as easy to operate as your own car.

## Skid steer loaders



Powerful, efficient, and user-friendly, Komatsu skid steer loaders display an impressive digging force and lifting capacity, and are perfectly suited for a large variety of jobs. Their Komatsu engine ensures low fuel consumption and exhausts emissions, with an easy access for maintenance.



# Skid steer loaders

## Skid steer loaders

Model	Engine power (ISO 14396)			Operating weight	Payload	Breakout force	Bucket capacity
	kW	HP	PS				
SK715-8	34.3	46.0	46.6	2820	680	1383	0.35
SK815-8	37.9	50.8	51.5	2960	750	1450	0.40
SK820-8	37.9	50.8	51.5	3140	950	1450	0.40







## Backhoe loaders

With several state-of-the-art innovations, Komatsu backhoe loaders are manufactured to provide the highest level of performance and to meet the particular needs of emerging markets.



## Backhoe loaders



Strong of a long tradition of quality and a well established experience in the worldwide industry of backhoe loaders, Komatsu aims to set new benchmarks for the market. Complete optimization of the operator's work environment, state-of-the-art technical solutions, and a wide choice of optional equipment and configurations: as always, the operator is at the centre of Komatsu's attention.

# Backhoe loaders

## Backhoe loaders

Model	Engine power (ISO 14396)			Operating weight	Travel speed	Bucket capacity
	kW	HP	PS			
WB93R-8	75.0	101	102	7555 - 9500	40	1.03
WB93S-8	75.0	101	102	8305 - 9700	40	1.1
WB97R-8	75.0	101	102	7745 - 9500	40	1.03
WB97S-8	75.0	101	102	8515 - 9700	40	1.1









## Compact wheel loaders

A broad choice of attachments, a comfortable seat and a great view. You'll enjoy working at the controls of a Komatsu compact wheel loader, and feel at home on any job site.

## Compact wheel loaders



Easy to work with, for any operator, Komatsu compact wheel loaders fully meet customers' needs. User-friendly, they are at home in confined spaces, are handy for moving material on construction and excavation sites, and are equally at ease with road work.

## Compact wheel loaders

### Compact wheel loaders

Model	Engine power (ISO 14396)			Operating weight	Bucket capacity
	kW	HP	PS		
WA70M-8	46.2	62.0	62.8	4980 - 5300	0.75 - 1.25
WA80M-8	53.7	72.0	73.0	5690 - 5995	0.80 - 1.25
WA100M-8	69.8	93.6	94.9	7075 - 7465	1.05 - 1.80





---

Your Komatsu partner:

**KOMATSU**

[komatsu.eu](https://www.komatsu.eu)

