

KOMATSU

2025



Product range

**Wheel loaders
WA700-8 &
WA475/WA485-11**



**Dump trucks
HD465/HD605-10**



Special application and industries models

Product range
Highlights 2025



Wheeled excavators



Electric mini excavators



**Hydraulic excavators
and crawler dozers with
intelligent Machine Control 2.0**



Mini-excavators



Mini-excavators

Remarkably versatile, Komatsu's mini-excavators are compact, light, and powerful. They can work anywhere, particularly in tight spaces. Perfectly suited to both end-users and rental companies, these machines offer first-class comfort and controllability to the experienced and the novice operator alike. Powered by state-of-the-art battery technology the electric mini-excavators PC20E-6, PC26E-6 and PC33E-6 leave zero local emissions in their wake, making them game-changers for workers nearby and the surrounding environment.

Mini-excavators

Model	Engine power (ISO 14396)			Operating weight	Max. digging depth	Bucket capacity
	kW	HP	PS			
PC09-1	6.8	9.1	9.2	880 - 1080	1465	0.016 - 0.025
PC16R-3	11.6	15.6	15.8	1570 - 1920	2160 - 2410	0.03 - 0.06
PC17R-5	11.8	15.8	16.0	1755 - 1835	2000 - 2300	0.022 - 0.028
PC18MR-5	11.8	15.8	16.0	1900 - 1990	2160 - 2360	0.03 - 0.06
PC20E-6*	11.8	-	-	2100	2100 - 2370	0.02 - 0.03
PC20R-5	11.8	15.8	16.0	1985 - 2040	2100 - 2370	0.020 - 0.030
PC24MR-5	15.8	21.2	21.5	2390 - 2540	2315 - 2665	0.035 - 0.085
PC26E-6*	15.8	-	-	2655	2470 - 2720	0.035 - 0.085
PC26MR-5	15.8	21.2	21.5	2700 - 2850	2470 - 2720	0.035 - 0.085
PC33E-6*	17.4	-	-	3620 - 3820	3130	0.03 - 0.09
PC33MR-5	18.2	24.4	24.7	3520 - 3660	2760 - 3130	0.03 - 0.10
PC38MR-5	18.2	24.4	24.7	3820 - 3960	3110 - 3455	0.04 - 0.12
PC50MR-5	29.1	39.0	39.6	5020 - 5280	3300 - 3705	0.055 - 0.16
PC55MR-5	29.1	39.0	39.6	5280 - 5420	3770 - 4130	0.055 - 0.18
PC58MR-5	29.1	39.0	39.6	5620 - 5760	3770 - 4130	0.055 - 0.18

* Electric



Midi-excavators



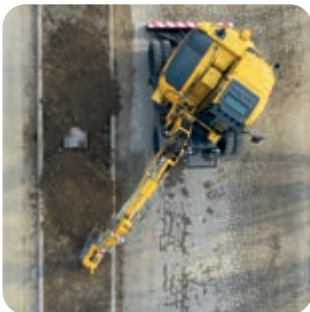
Midi-excavators

Komatsu created midi-excavators as the perfect compromise between the compactness and manoeuvrability of mini-excavators and the power of larger earthmoving machines.

Komatsu's crawler and wheeled midi-excavators are specifically designed to work in tight spaces and hard-to-reach areas. With special features and options, these multipurpose machines are equipped with a swing offset boom and can be supplied in customised configurations.

Midi-excavators

Model	Engine power (ISO 14396)			Operating weight	Max. digging depth	Bucket capacity
	kW	HP	PS			
PC78US-11	50.7	68.0	68.9	7910 - 8080	4660	0.090 - 0.200
PC80MR-5	46.2	62.0	62.8	8000 - 8270	3975 - 4335	0.130 - 0.270
PC88MR-11	50.7	68.0	68.9	8500 - 9130	4160 - 4675	0.090 - 0.340
PW98MR-11	50.7	68.0	68.9	10090 - 10760	4055 - 4305	0.107 - 0.282
PW138MR-11	72.6	97.3	98.7	13350 - 13950	4180 - 4330	0.093 - 0.400



Skid steer loaders



Skid steer loaders

Just jump in any Komatsu skid steer loader – and enjoy the ride. With a standard joystick and simple controls at your fingertips, you will find these machines as easy to operate as your own car.

Powerful, efficient, and user-friendly, Komatsu skid steer loaders display an impressive digging force and lifting capacity, and are perfectly suited for a large variety of jobs. Their Komatsu engine ensures low fuel consumption and exhausts emissions, with an easy access for maintenance.

Skid steer loaders

Model	Engine power (ISO 14396)			Operating weight	Payload	Breakout force	Bucket capacity
	kW	HP	PS				
SK715-8	34.3	46.0	46.6	2820	680	1383	0.35
SK815-8	37.9	50.8	51.5	3000	750	1450	0.40
SK820-8	37.9	50.8	51.5	3140	950	1450	0.40



Backhoe loaders



Backhoe loaders

With several state-of-the-art innovations, Komatsu backhoe loaders are manufactured to provide the highest level of performance and to meet the particular needs of emerging markets.

Strong of a long tradition of quality and a well established experience in the worldwide industry of backhoe loaders, Komatsu aims to set new benchmarks for the market. Complete optimization of the operator's work environment, state-of-the-art technical solutions, and a wide choice of optional equipment and configurations: as always, the operator is at the centre of Komatsu's attention.

Backhoe loaders

Model	Engine power (ISO 14396)			Operating weight kg	Travel speed km/h	Bucket capacity m ³
	kW	HP	PS			
WB93R-8	75.0	101	102	7555 - 9500	40	1.03
WB93S-8	75.0	101	102	8305 - 9700	40	1.1
WB97R-8	75.0	101	102	7745 - 9500	40	1.03
WB97S-8	75.0	101	102	8515 - 9700	40	1.1



Compact wheel loaders



Compact wheel loaders

A broad choice of attachments, a comfortable seat and a great view. You'll enjoy working at the controls of a Komatsu compact wheel loader, and feel at home on any job site.

Easy to work with, for any operator, Komatsu compact wheel loaders fully meet customers' needs. User-friendly, they are at home in confined spaces, are handy for moving material on construction and excavation sites, and are equally at ease with road work.

Compact wheel loaders

Model	Engine power (ISO 14396)			Operating weight kg	Bucket capacity m ³
	kW	HP	PS		
WA70M-8	46.2	62.0	62.8	4980 - 5300	0.75 - 1.25
WA80M-8	53.7	72.0	73.0	5690 - 5995	0.80 - 1.25
WA100M-8	69.8	93.6	94.9	7075 - 7465	1.05 - 1.80



Wheeled excavators



Wheeled excavators

Safe and precise lifting and fast travel speed make Komatsu wheeled excavators exceptional. With a broad range of functions and operating information directly at the operator's fingertips they are test-proven to stand up to the most demanding work environments.

Komatsu wheeled excavators are designed and built expressly for European markets. Stable and safe, they deliver outstanding lifting power with excellent productivity, reliability and operator comfort in a robust, environmentally-friendly package. A wide range of options and attachments, from tiltrotator preparations to 3D machine guidance, significantly enhance versatility.

Wheeled excavators

Model	Engine power (ISO 14396)			Operating weight	Bucket capacity max.
	kW	HP	PS		
PW148-11	110	148	150	13865 - 16100	0.86
PW158-11	110	148	150	15125 - 17360	0.94
PW160-11	110	148	150	16030 - 18415	1.13
PW168-11	110	148	150	15775 - 18115	1.13
PW180-11	123	165	167	17600 - 20600	1.13
PW198-11	129	173	175	17435 - 19355	1.13



Crawler excavators



Crawler excavators

Quiet, safe and reliable. The environmentally-friendly Komatsu crawler excavators are simple to operate and probably the most efficient around. It's no wonder they're also among the top selling hydraulic excavators in the world. From the popular PC138US to the mighty PC2000, all Komatsu crawler excavators share a number of features such as class-leading power output, stability, lifting capacity and operator comfort. Short-tail models deliver exceptional functionality for confined workspaces. All machines offer great fuel efficiency and performance, with a growing number of intelligent Machine Control models. The upcoming electric excavators PC138E-11 and PC210LCE-11 meet the increasing demand for decarbonization and low noise on construction sites in the future.

Crawler excavators

Model	Engine power (ISO 14396)			Operating weight	Bucket capacity max.
	kW	HP	PS		
PC138E-11*	72.5	-	-	15000	0.72
PC138US-11	72.6	97.3	98.7	14080 - 15800	0.72
PC170LC-11	90.0	121	122	18300 - 21455	0.94
PC210LCi-11	123	165	167	22120 - 23580	1.68
PC210/LC/NLC-11	123	165	167	22120 - 24110	1.69
PC210LCE-11*	123	-	-	24400	1.69
PC228USLC-11	123	165	167	24350 - 27925	1.49
PC230NHD-11	123	165	167	23515 - 24315	1.45
PC240LC/NLC-11	141	189	192	24700 - 27530	1.89
PC290LC/NLC-11	159	213	216	29850 - 32280	2.02
PC290LCi/NLCi-11	159	213	216	28950 - 30950	2.02
PC360LC/NLC-11	202	271	275	35800 - 36850	2.66
PC360LCi/NLCi-11	202	271	275	35770 - 36850	2.66
HB365LC/NLC-3***	235	315	320	36300 - 37350	2.66
PC390HRD-11**	202	271	275	45760 - 63400	(max. 4000 kg)
PC490/LC-11	270	362	367	46470 - 48860	3.50
PC490HRD-11**	270	362	367	55200 - 75830	(max. 5000 kg)
PC700LC-11	327	439	445	66110 - 69540	5.58
PC950/LC-11	405	543	551	94600 - 99800	6.50
PC1250/SP-11	578	775	786	115900 - 119500	6.70 - 7.20
PC2000-11	794	1065	1080	195000 - 201500	11.00 - 12.00

* Electric

** High Reach Demolition

*** Total hybrid power



Hydraulic mining excavators



Hydraulic mining excavators

Through technology and manufacturing innovation, we partner with you to create a sustainable future. Tailored to your needs, our machines are equipped with diesel or electric drive trains as well as front shovel or backhoe attachments supporting your application. The essential minerals from your mines are used to power modern technology, facilitate community growth and move society forward. These minerals are not easy to find and are even tougher to mine. Your customers trust you to deliver these resources, and you need a provider of equipment, services and technology you can rely on to help keep your operation productive and efficient. Together we can focus on operating safely, productively and sustainably.

Hydraulic mining excavators

Model	Engine power (ISO 14396)			Operating weight t	Bucket capacity m ³	Truck size short tons
	kW	HP	PS			
PC3000-11	940	1260	1280	257 - 264	16	100 - 150
PC4000-11	1400	1875	1900	398 - 409	22	150 - 200
PC5500-11	1880	2520	2560	537 - 556	29	200 - 250
PC7000-11	2500	3350	3400	682 - 700	38	250 - 320
PC8000-11	3000	4020	4080	759 - 790	42	320 - 400

From the machine model PC3000 all the way to the PC8000, our Hydraulic mining excavators are available in front shovel and backhoe configuration as well as with diesel (Tier 2 or Tier 4) or electric main drive. With our state-of-the-art technology we are minimizing your cost per ton. The robust machine design enables exceptional productivity with machine lifetimes up to 175000 hours and beyond. With more than four decades of experience, we are the market leader in electrified loading equipment, empowering you to reduce your carbon footprint and realize zero-emission loading.



Wheel loaders



Wheel loaders

Highly versatile, and featuring a perfect mix of power, comfort and reliability, Komatsu wheel loaders set new standards for the industry. With either a hydrostatic drive line or Powershift, Komatsu wheel loaders always offer exceptional tractive force and ultra-low fuel consumption. Komatsu wheel loaders have proven themselves worldwide as multi-purpose performers in earthmoving operations and as prime movers in quarries. With a high resale value and long service life, they are comfortable, environmentally friendly and efficient. The new WA475-11 and WA485-11 models continue the line of Komatsu wheel loaders with the innovative Komatsu Hydraulic Mechanical Transmission (K-HMT) technology.

Wheel loaders

Model	Engine power (ISO 14396)			Operating weight	Bucket capacity
	kW	HP	PS		
WA200-8*	95.2	128	129	12045 - 12475	1.9 - 2.0
WA270-8*	115	153	156	12975 - 13525	2.2 - 2.3
WA320-8*	127	170	173	15095 - 16560	2.6 - 2.8
WA380-8*	143	192	195	18155 - 19765	3.2 - 6.5
WA470-8*	204	273	277	24170 - 25670	4.1 - 6.0
WA475-10*	217	291	295	25335 - 30070	4.2 - 5.5
WA475-11	257	345	349	24740 - 26430	4.2 - 5.5
WA480-8	224	300	305	26315 - 27535	4.8 - 5.5
WA485-11	271	363	368	27940 - 28915	4.8 - 5.8
WA500-8*	266	357	362	34855 - 36380	5.5 - 7.2
WA600-8*	396	530	538	54170 - 56740	6.4 - 7.8
WA700-8*	578	775	786	97100	8.7 - 10.3
WA800-8*	638	856	867	115530	10.0 - 13.0
WA900-8*	672	901	914	116400	11.5 - 14.5

* High-lift option available



Crawler dozers



Crawler dozers

Komatsu's "super slant nose" crawler dozers provide an unrivalled cab view of the work equipment and of the jobsite. Add to that: Komatsu quality, a powerful and fuel efficient engine and a state-of-the-art undercarriage and you get the best crawler dozers money can buy.

Komatsu crawler dozers combine a comfortable operator environment with the latest technology. High-quality components and a unique undercarriage design make them the most cost-efficient in their class. Intelligent Machine Control models further boost dozing productivity, lower operating costs and improve job site safety.

Crawler dozers

Model	Engine power (ISO 14396)			Operating weight	Blade capacity	Blade size (max.)
	kW	HP	PS			
D51EX-24	99.0	133	135	13760	2.90	3350 × 1130 (INPAT)
D51PX-24*	99.0	133	135	14180	3.35	3350 × 1170 (INPAT)
D51EXi-24	99.0	133	135	13820	2.90	3350 × 1130 (INPAT)
D51PXi-24*	99.0	133	135	14300	3.35	3350 × 1170 (INPAT)
D61EX-24	126	169	171	18520	3.40	3250 × 1195 (INPAT)
D61PX-24*	126	169	171	19460	3.80	3860 × 1155 (INPAT)
D61EXi-24	126	169	171	18680	3.40	3250 × 1195 (INPAT)
D61PXi-24*	126	169	171	19620	3.80	3860 × 1155 (INPAT)
D65EX-18	164	220	223	21600	5.61	3410 × 1425 (Sigma)
D65WX-18	164	220	223	22300	5.90	3580 × 1425 (Sigma)
D65PX-18*	164	220	223	23000	3.69	3980 × 1100 (Straight tilt)
D65EXi-18	164	220	223	21700	5.61	3410 × 1425 (Sigma)
D65PXi-18*	164	220	223	23100	3.69	3980 × 1100 (Straight tilt)
D71EX-24	179	240	243	22600	4.42	3870 × 1265 (INPAT)
D71PX-24*	179	240	243	23100	4.65	4010 × 1265 (INPAT)
D71EXi-24	179	240	243	22700	4.42	3870 × 1265 (INPAT)
D71PXi-24*	179	240	243	23200	4.65	4010 × 1265 (INPAT)
D85EX-18	199	267	271	27700	7.20	3575 × 1665 (Sigma)
D85PX-18*	199	267	271	28900	5.90	4355 × 1400 (Straight tilt)
D85EXi-18	199	267	271	28420	7.20	3575 × 1665 (Sigma)
D85PXi-18*	199	267	271	29590	5.90	4355 × 1400 (Straight tilt)
D155AX-8	268	360	364	41690	9.40	4060 × 1880 (Sigma)
D155AXi-8	268	360	364	41800	9.40	4060 × 1880 (Sigma)
D375A-8	578	775	786	72900	22.0	5215 × 2525 (U tilt)
D475A-8	777	1040	1056	112620	34.4	6205 × 2610 (U tilt)

*LGP/swamp bulldozer



Dump trucks



Dump trucks

First-class comfort and safety are standard features on any Komatsu model. Our dump trucks also offer power, performance, and productivity. With all the latest technology aboard, they get the job done quickly and neatly. Komatsu dump trucks can transport heavy loads quickly, easily and cost effectively. Available in rigid or articulated versions with state-of-the-art designs, they are built around a powerful Komatsu engine and are exceptionally strong machines. They guarantee complete driving safety, even at high speeds.

Rigid dump trucks

Model	Engine power (ISO 14396)			Rated payload	Max. body capacity SAE	Max. travel speed
	kW	HP	PS			
				metric tons	m ³	km/h
HD325-8	386	518	525	36.5	24.0	68
HD405-8	386	518	525	40	27.3	66
HD465-10	610	818	829	55.5	37.1	70
HD605-10	610	818	829	64.1	43.0	70
HD785-8	895	1200	1217	92.2	60.0	65
HD1500-8	1180	1580	1604	139	78.0 / 94.0	56.5

Electric dump trucks

Model	Engine power (ISO 14396)			Rated payload	Max. body capacity SAE	Max. travel speed
	kW	HP	PS			
				metric tons	m ³	km/h
730E-10	1492	2000	2029	186	133	64.5
830E-5	1865	2500	2535	227	158	64.5
930E-5	2014	2700	2738	290	202	64.5
980E-5	2610	3500	3550	363	250	64.5

Articulated dump trucks

Model	Engine power (ISO 14396)			Rated payload	Max. body capacity SAE	Max. travel speed
	kW	HP	PS			
				metric tons	m ³	km/h
HM300-5	248	332	337	28.0	17.1	58.6
HM400-5	353	473	480	40.0	24.0	56.0



Motor graders

Motor graders

Model	Engine power (ISO 14396)			Operating weight	Blade width
	kW	HP	PS		
GD675-7	136 - 165	183 - 221	185 - 224	17350 - 19220	4.27



Motor graders

Komatsu's graders combine the popular characteristics of previous series with a EU Stage V engine and other features that focus on high performance and fuel efficiency, operator comfort, safety and easy serviceability.

Powerful, with great control and low emissions, Komatsu motor graders have a power train with a torque converter drive and automatic transmission along with selectable work modes that combine for top class performances and low operation costs. A long wheelbase and a large articulation angle make slope cutting easy and provide simple and high quality levelling.

Mobile crushers

Model	Engine power (ISO 14396)			Operating weight	Crusher size (jaw crusher)	Crushing capacity
	kW	HP	PS			
BR380JG-3	159	213	216	33500 - 35310	1065 × 550	240



Mobile crushers

The BR380JG-3 is EU Stage V compliant, and incorporates Komatsu technology to provide the operator with easy to select operating modes. With a maximum crushing capacity of 240 t/h and with the addition of the muck conveyor and magnetic separator the machine can work in multiple application. To meet Komatsu's commitment to the environment and increasing demands from customers to reduce CO₂ emission, the BR380JG-3 has a unique CO₂ off-setting scheme, which will be applied to each and every one sold in Europe.

Your Komatsu partner:

KOMATSU

[komatsu.eu](https://www.komatsu.eu)

