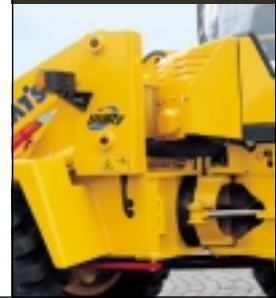


KOMATSU

Utility

WB
98A-2



WB98A-2

WB98A-2

ARTICULATED BACKHOE LOADER

NET HORSEPOWER
SAE J1349
72 kW 96,5 HP

OPERATING WEIGHT
From 8.290 kg
to 8.750 kg

3 MACHINES IN 1

The WB98A-2 is the successful combination of three specific models in a single machine:

- BACKHOE LOADER
- WHEELED LOADER
- TOOL CARRIER

In fact, based on needs, the WB70A-1 can be transformed into a specific machine for digging, loading or construction site operations. Thanks to the use of the front hydraulic quick coupler, available on request, any kind of equipment can be connected in just a few seconds without having to vary the digging forces while using the loader.

Transmission

The hydrostatic transmission offers many advantages: continuous and constant traction, braking effect on slopes, operations carried out on wheels only without stabilizers and travel speed control that doesn't depend on engine rpm (thanks to the *inch* pedal). Besides these features, the WB98A-2 today offers one of the highest speeds in its category. The main characteristic of this model is the 40° central articulation, which, together with the 20° total oscillation of the frames (that can be locked from the cab), make the WB98A-2 unbeatable in terms of stability and adaptability to even the most irregular surfaces, thus allowing the load to be transported smoothly and safely under all operating conditions.

Excellent performance and high productivity

The "High-Flow" hydraulic system, the backhoe that's the end result of 35 years of experience, the front loader with "Z" kinematic motion and a sturdy structure put the WB98A-2 at the top of its category for any type of performance. Engine power and digging forces make this machine a champion of productivity. Since the machine can operate with the front loader always aligned with the front wheels (a specific feature of wheeled loaders), greater thrusting forces are generated during loading along with higher stability during steering with no loader torsion.





Comfortable and environmentally-friendly

The ROPS and FOPS cab is roomy and comfortable, thanks to the efficient positioning of the controls, while excellent visibility is guaranteed by the wide glazed surfaces, the central position of the engine and the special configuration of the articulation. Ergonomic controls and reduced noise levels inside and outside the cab, together with the ventilation system with intake air filtering, provide the operator with a truly comfortable environment.

Versatility

Thanks to the exclusive KOMATSU coupling/uncoupling system, the operator can release the entire backhoe unit simply by moving a lever and disconnecting 2 pipes supplied with a rapid coupler. Therefore, the even more compact dimensions and improved manoeuvrability make the WB98A-2 the best choice for working in limited spaces. A counterweight to increase machine stability is available upon request.

Maintenance

Owing to the position of the inspection points and the particularly safety-conscious overall design, the few routine maintenance operations required can be carried out without using special tools, while reducing time and costs and enhancing machine reliability at the same time.



SPECIFICATIONS



ENGINE

Model	Komatsu S4D106-1FC
Type	low emissions
Max. power	84,2 kW / 112,9 HP
Rated power:	
(SAE J 1349)	72 kW / 96,5 HP - 2.200 rpm
(DIN 6271)	73,1 kW / 99,5 PS - 2.200 rpm
(80/1269/EC)	72 kW / 96,5 HP - 2.200 rpm
Max. torque (80/1269/EC)	375 Nm - 1.500 rpm
Displacement	4.412 cm ³
Number of cylinders	4



OPERATING WEIGHT

Operating weight with backhoe (ISO 6016)	8.290 kg
Weight max with backhoe	8.750 kg
Operating weight with counterweight (ISO 6016)	7.700 kg
Weight max with counterweight	7.970 kg



HYDRAULIC SYSTEM

Two gear pumps with full flow to the backhoe.	
Max. delivery	165 /min
Pressure	20 MPa (200 bar)
Aluminium oil cooler.	



ELECTRIC SYSTEM

Battery	12V - 155 Ah
Alternator	60 A



STEERING

Hydrostatic with LOAD SENSING steering (Orbitrol) and priority valve.
 Frame articulation..... $\pm 40^\circ$
 Frame oscillation through bearing ring $\pm 10^\circ$
 The central oscillation can be hydraulically locked by means of an electrically controlled button.



TRANSMISSION

Hydrostatic, closed circuit transmission with variable displacement pump and motor and 2-speed gearbox. Hydraulic speed electrically operated selection with lever. Electrically operated gearbox selection with button.

- Forward and reverse working speeds:
 - 1st from 0 to 6,5 km/h
 - 2nd from 0 to 12 km/h
 - Forward and reverse travel speeds:
 - 3rd from 0 to 20 km/h
 - 4th from 0 to 36 km/h
- An electro-hydraulically controlled button puts the transmission into neutral.



AXLES

Rigid axles (*Heavy Duty* type) with epicyclic reduction gears. Electro-hydraulically controlled differential locking on the rear axle.



BRAKES

SERVICE: hydraulically operated oil immersed disc brakes on rear axle. Braking system split between right and left side. Double pedal.
 PARKING: hand operated oil immersed multidisc brake acting on the transmission.



TYRES

Standard:
 front/rear..... 16/70 x 24
 Opzionali:
 front/rear..... 425/75 R20; 15R-22,5



CAB

Soundproof cab, ROPS homologated in conformity with the ISO 3471 rules and FOPS homologated in conformity with the ISO 3449 rules, flexibly mounted on the main frame by means of "Silent block".

- Two access doors with 180° opening
- 2-section rear door completely openable outwards
- Tempered safety glass
- Adjustable seat as regards height, springing and back inclination
- Adjustable steering wheel
- Lights for road circulation
- Front and rear working lights in the canopy
- Front and side dashboards complete with instruments and pilot lights for a constant control of the machine operation
- Front and rear windscreen wipers
- Heating.

ROAD HOMOLOGATION



REFILLS

Fuel tank	110 /
Hydraulic oil tank.....	90 /
Diesel engine oil.....	9 /
Brakes oil	0,8 /
Axles oil	
- rear axle.....	10 /
- front axle.....	12 /
- epicyclic reduction gears	1 /
Cooling system	18 /



LOADER

Bucket width	2.250 mm
Standard bucket capacity (ISO 7546).....	1,02 m ³
Lifting capacity	
at max. height (ISO 8313)	3.160 daN (3.223 kg)
Lifting capacity	
at ground level (ISO 8313)	6.070 daN (6.191 kg)
Breakout force (ISO 8313)	6.350 daN (6.477 kg)
Values valid for machine provided with backhoe.	

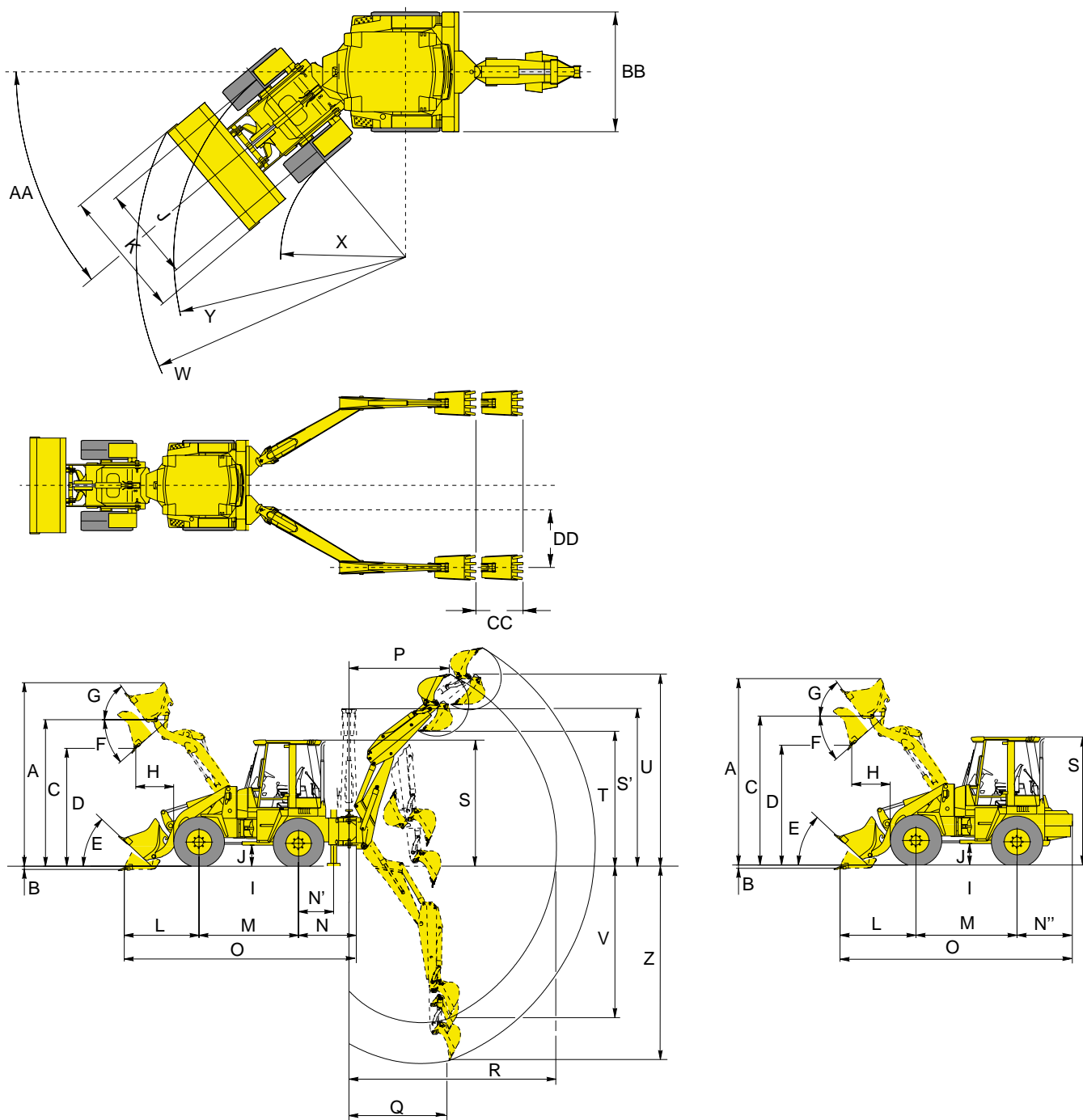


BACKHOE

Bucket breakout force (ISO 6015)	5.810 daN (5.926 kg)
Arm breakout force (ISO 6015)	3.770 daN (3.846 kg)
Bucket rotation	200°
Backhoe mass with bucket	2.100 kg

WB98A-2 BACKHOE LOADER

DIMENSIONS



			OFFSET BOOM on std or telescopic configuration	STANDARD retracted arm	TELESCOPIC ARM max extension		
A.....	4.340 mm	O.....	5.575 mm	P.....	2.590	3.580	mm
B.....	75 mm	N'.....	- mm	Q.....	2.450	3.450	mm
C.....	3.470 mm	N''.....	1.170 mm	R.....	5.550	6.550	mm
D.....	2.790 mm	O''.....	5.295 mm	S'.....	3.740	-	mm
E.....	43°	S.....	2.920 mm	T.....	4.080	5.080	mm
F.....	42°	J.....	1.650 mm	U.....	5.510	6.510	mm
G.....	54°	K.....	2.250 mm	V.....	4.500	5.650	mm
H.....	895 mm	X.....	2.200 mm	Z.....	4.950	6.100	mm
I.....	440 mm	Y.....	4.070 mm	CC.....	-	1.150	mm
L.....	1.770 mm	W.....	4.680 mm	DD.....	1.080	-	mm
M.....	2.355 mm	AA.....	40°				
N.....	1.450 mm	BB.....	2.093 mm				

WB98A-2 BACKHOE LOADER

STANDARD EQUIPMENT

- | | | |
|--|--|--|
| <ul style="list-style-type: none"> • Front bucket with teeth • Inch pedal • Differential lock • Backhoe unit quick coupling • ROPS FOPS cab • 3-element front hydraulic valve • Adjustable seat | <ul style="list-style-type: none"> • Floating element • Ventilation (filtered fresh air intake) and heater • Hydrostatic transmission • External rear-view mirrors • Transmission and oscillation locking systems | <ul style="list-style-type: none"> • Front equipment single-lever control • Tyres 16/70x24 |
|--|--|--|

OPTIONAL EQUIPMENT

- | | | |
|--|--|--|
| <ul style="list-style-type: none"> • Front auxiliary hydraulic circuit (6-way valve) • Hose burst valve: <ul style="list-style-type: none"> - loader arm - backhoe • Telescopic arm • Offset boom • Telescopic arm + offset boom • Rear counterweight instead of backhoe (1.800 kg) • Rear cover | <ul style="list-style-type: none"> • Hydraulic hammer circuit • Hydraulic circuit for grass-cutter (std arm) • Hydraulic circuit for grass-cutter (telescopic arm) • TUV+TBG version (20 km/h or 35 km/h) • "Inching" manual command • Optional tyres 425/75 -R20; 15R -22.5 • Fuel filling pump • Radio • Air cyclone pre-filter • Backup alarm | <ul style="list-style-type: none"> • Biodegradable oil • Loader attachments: <ul style="list-style-type: none"> - 4x1 bucket - hydraulic quick coupler - pallet forks - cutting edge on teeth - bolt-on cutting edge • Backhoe attachments: <ul style="list-style-type: none"> - range of buckets (300 ÷ 900 mm) - ditch cleaning bucket (1.400 mm) - ditch digging bucket (1.000 mm) |
|--|--|--|

KOMATSU

Komatsu Utility Europe
 Head Office
 via Atheste 4
 35042 Este (Padova)
 Tel. +39 0429 616111
 Fax +39 0429 601000
 www.equipmentcentral.com
 utility@komatsu.it



COMPANY WITH
 ENVIRONMENTAL MANAGEMENT
 SYSTEM CERTIFIED BY DNV
 ISO 14001